



International Energy Conservation Code

Code updates by Charleston County Building Services.

For additional copies or questions, contact Building Services at:

Email: buildingservices@charlestoncounty.org

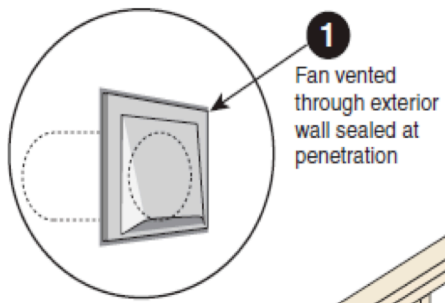
Phone: 843-202-6940



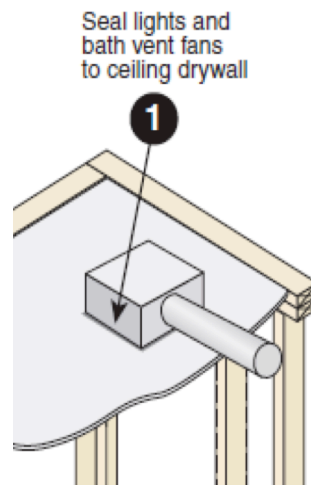
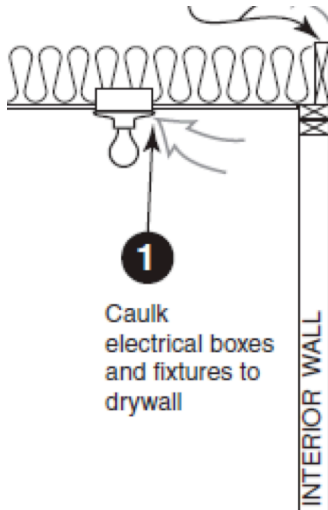
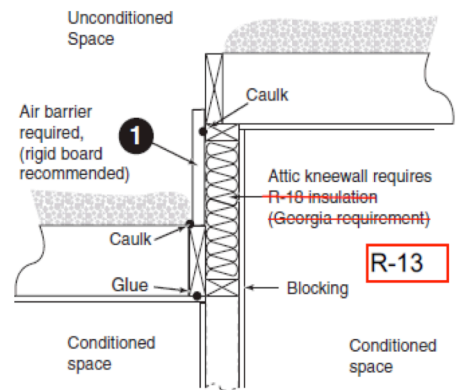
International Energy Conservation Code

Table 402.4.2: Air Barrier and Insulation Inspection Component Criteria

Component	Criteria	Applies to
402.4.2 402.4.1 Air Barrier and Thermal Barrier	<p>Exterior Thermal envelope Insulation for framed walls is installed in substantial contact and continuous alignment with building envelope barrier.</p> <p>Breaks or joints in the air barrier are filled or repaired.</p> <p>Air-permeable insulation is not used as a sealing material.</p> <p>Air-permeable insulation is inside of an air barrier.</p>	Builder/Mechanical Trades



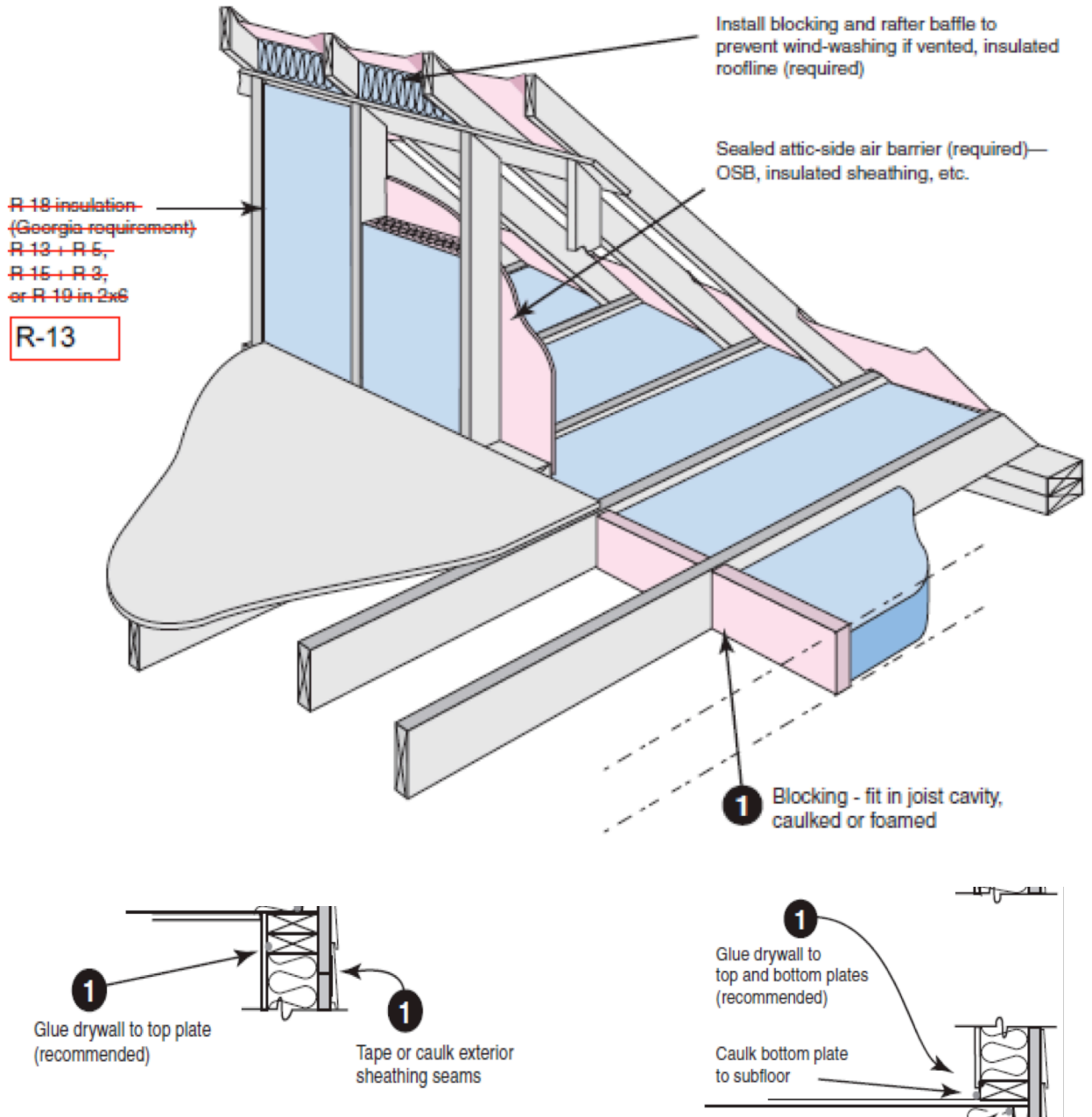
Two-level attic



Continued on Page 3



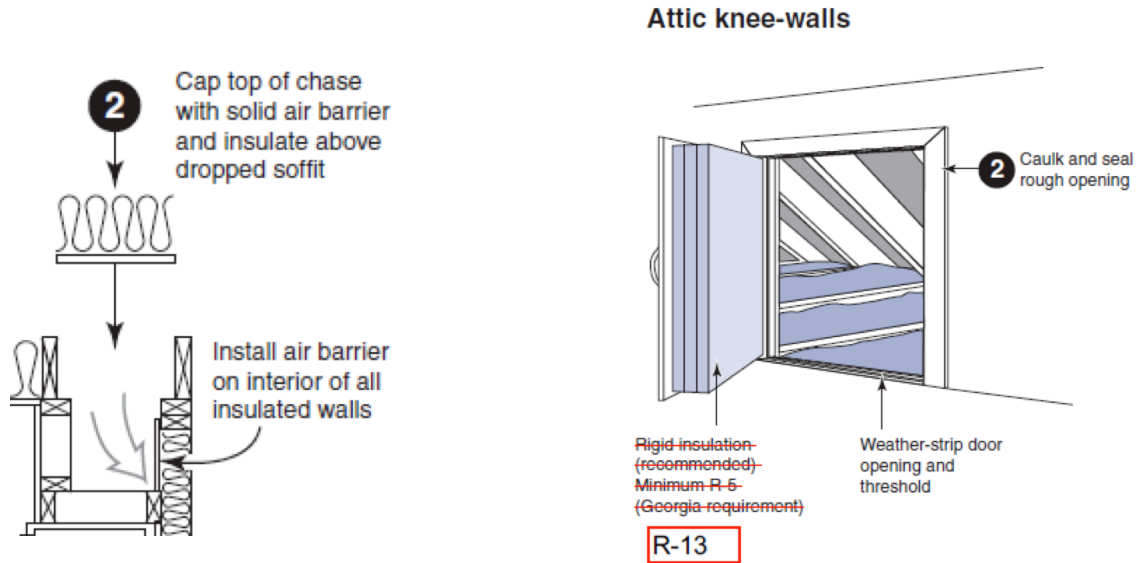
International Energy Conservation Code





International Energy Conservation Code

Component	Criteria	Applies to
402.4.1 5 & 10 Ceiling/attic	Air barrier in any dropped ceiling/soffit is substantially aligned with insulation and any gaps are sealed. Attic access (except unvented attic), knee wall door, or drop down stair is sealed.	Builder

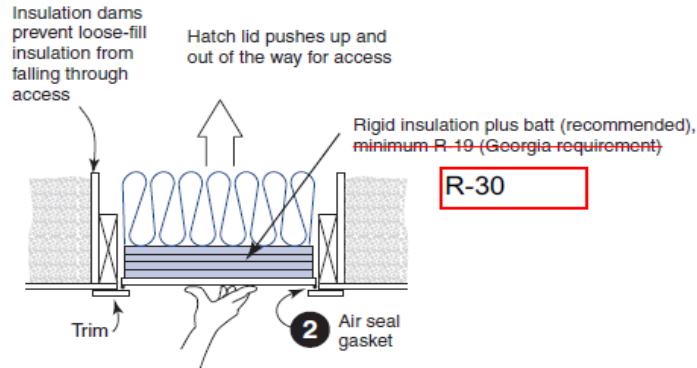


Continued on Page 5

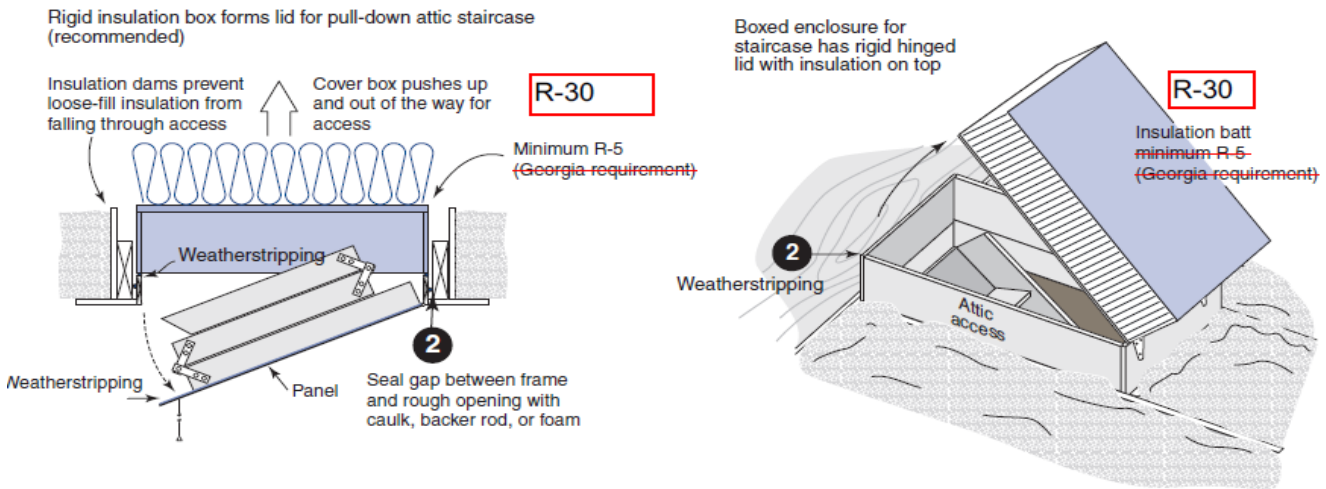


International Energy Conservation Code

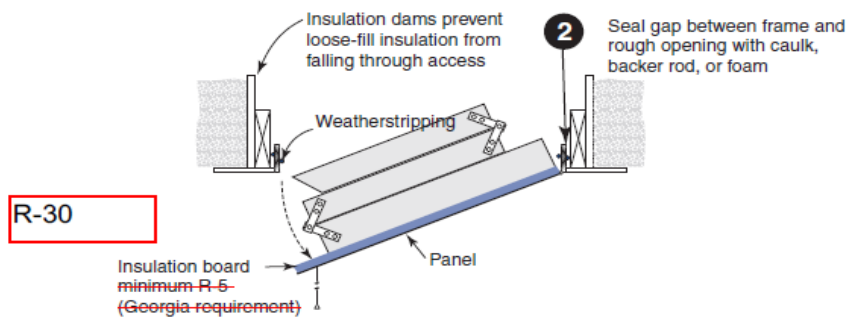
Attic scuttle



Attic pull-down stairs



Attic pull-down stairs



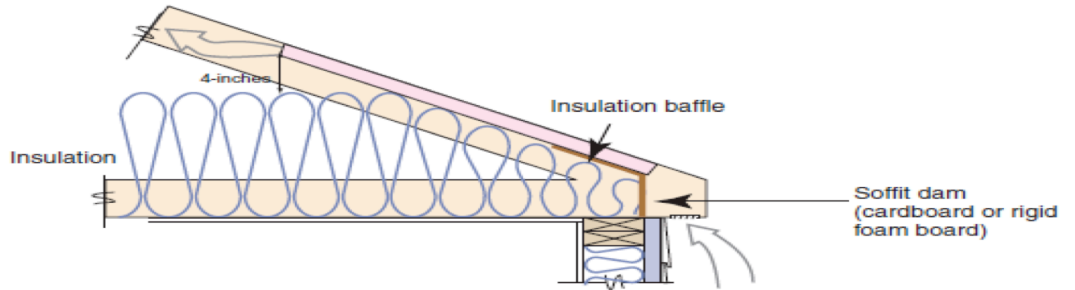
Continued on Page 6



International Energy Conservation Code

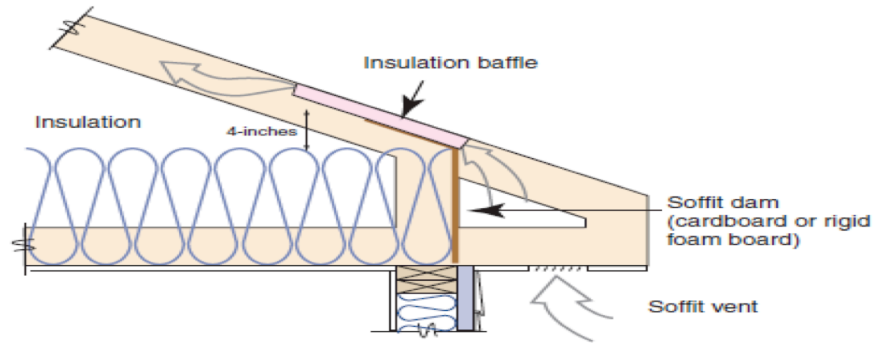
Standard Truss with tapered insulation depth

REScheck Required



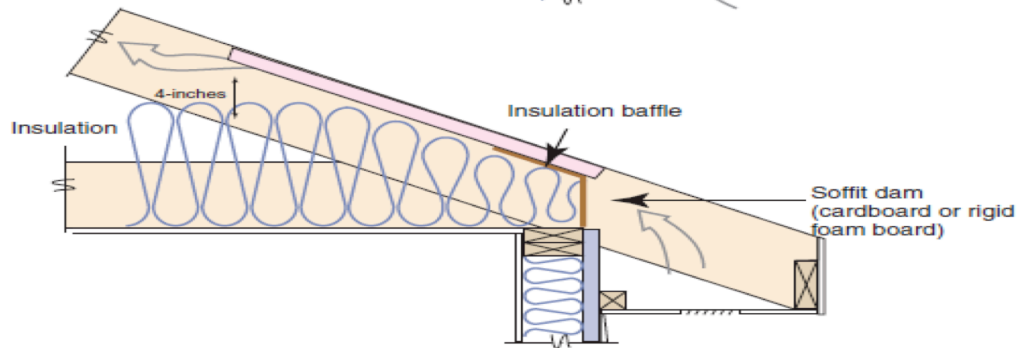
Energy Truss with full height insulation (recommended)

Perscriptive Method



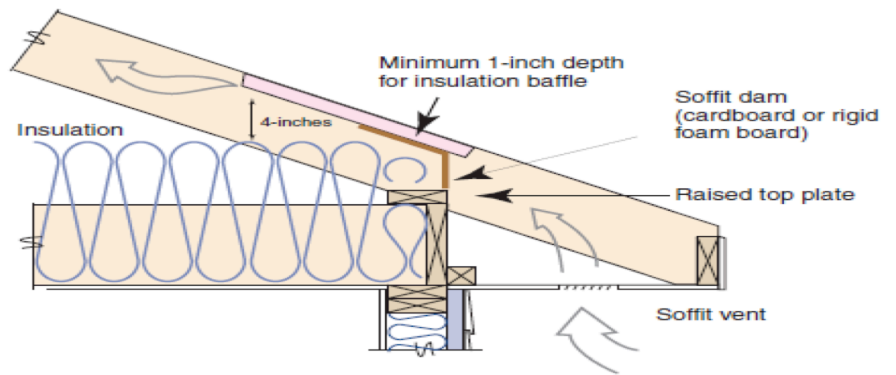
Standard rafter and top plate with tapered insulation depth

REScheck Required



Rafter on raised top plate with full height insulation (recommended)

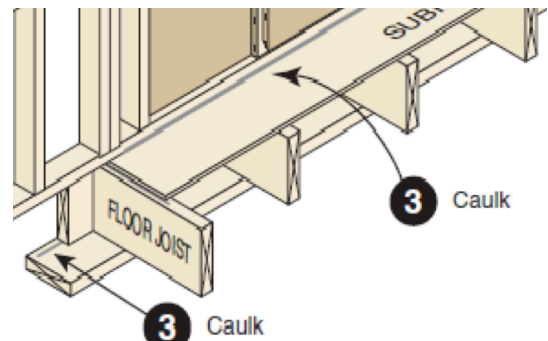
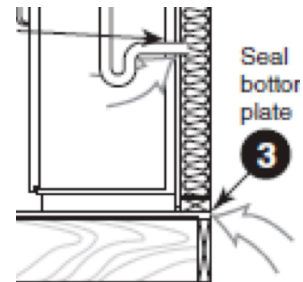
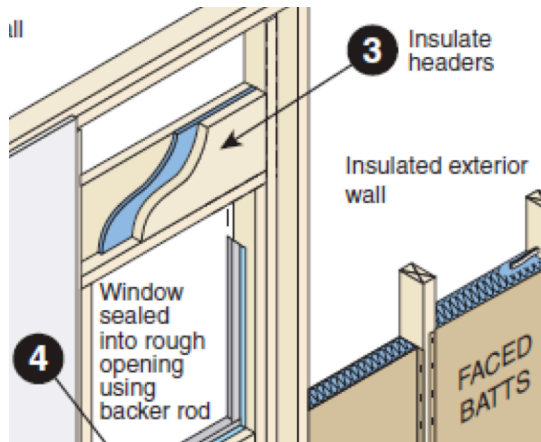
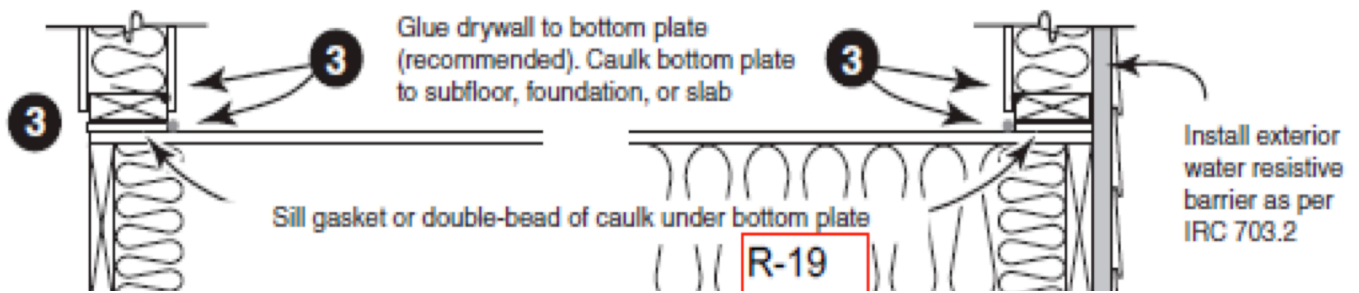
Perscriptive Method





International Energy Conservation Code

Component	Criteria	Applies to
402.4.2 Walls	Corners and headers are insulated. Junction of foundation and sill plate is sealed.	Builder

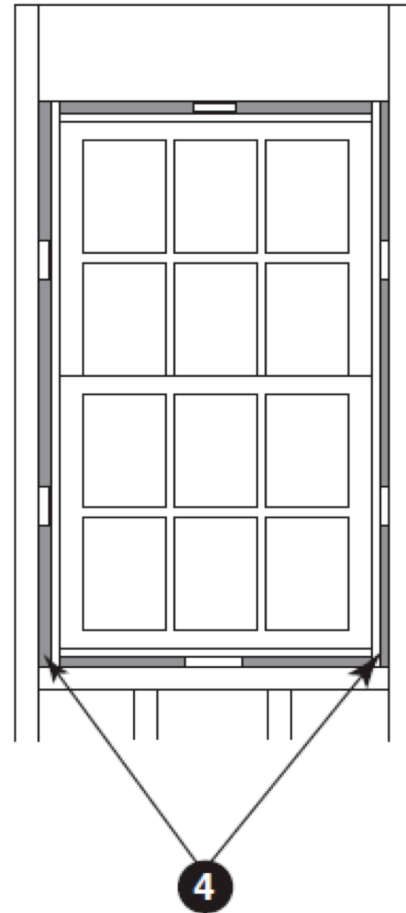
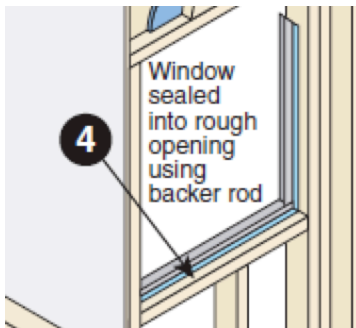




International Energy Conservation Code

Component	Criteria	Applies to
402.4.1(3) Windows and Doors	Space between window/door jambs and framing is sealed.	Builder

Window rough opening

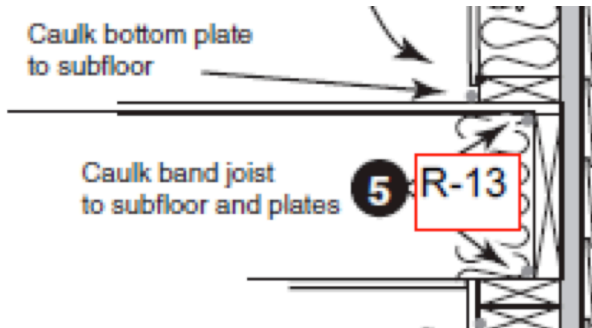


Use backer rod or spray foam (appropriate for windows) to fill gaps between window/door and rough opening

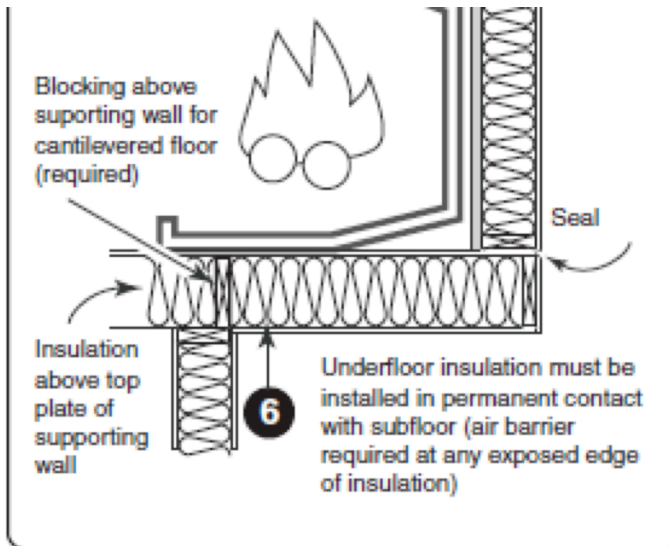


International Energy Conservation Code

Component	Criteria	Applies to
402.4.1(11) Rim joists	Rim joists are insulated and include an air barrier.	Builder/Insulation Trade



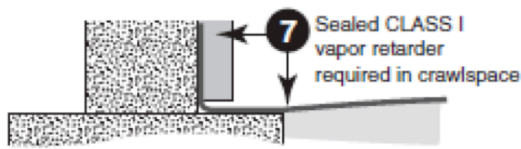
Component	Criteria	Applies to
402.2.6 Floors (including above-garage and cantilevered floors)	Insulation is installed to maintain permanent contact with underside of subfloor decking. Air barrier is installed at any exposed edge of insulation.	Builder





International Energy Conservation Code

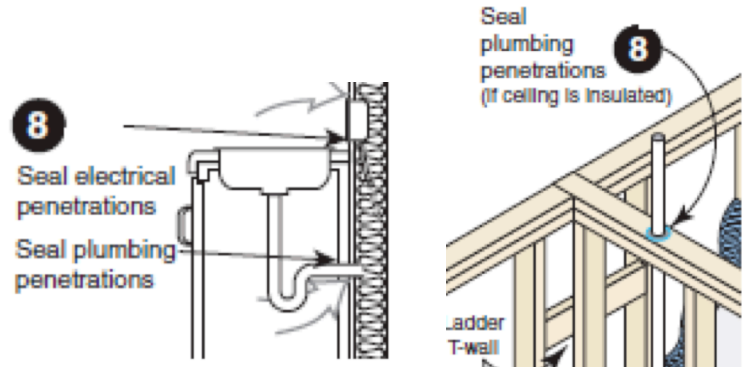
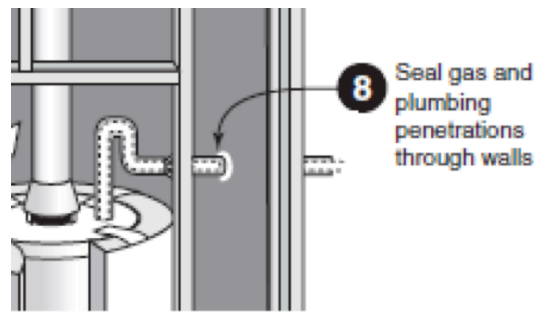
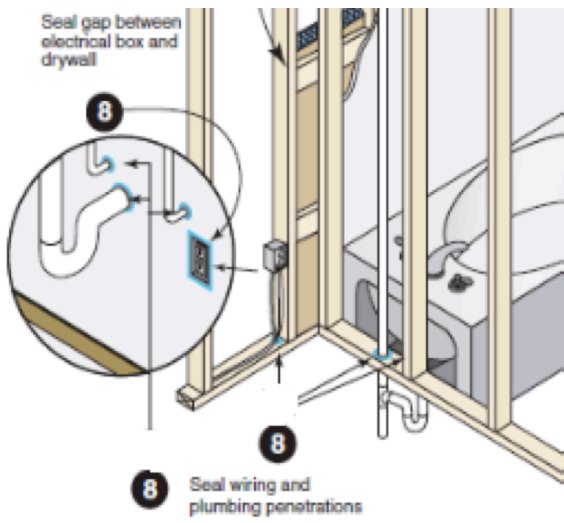
Component	Criteria	Applies to
402.2.9 Crawl Space Walls	Insulation is permanently attached to walls. Exposed earth in invented crawl spaces is covered with Class I vapor retarder with overlapping joints taped.	Builder/Insulation Trades



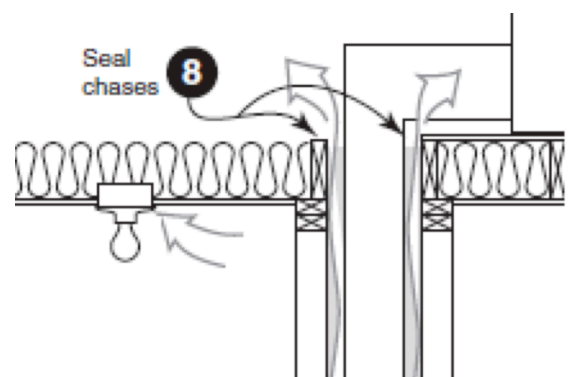
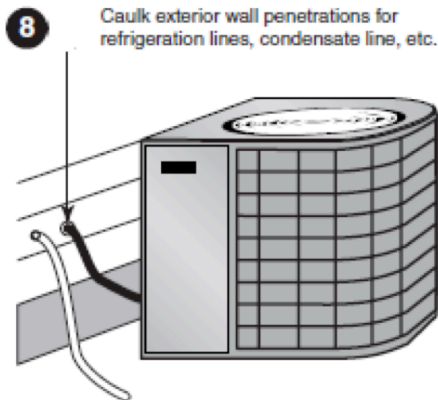


International Energy Conservation Code

Component	Criteria	Applies to
402.2.2 Shafts, penetrations	Duct shafts, utility penetrations, knee walls and flue shafts opening to exterior or unconditioned space are sealed.	Mechanical/Builder trades



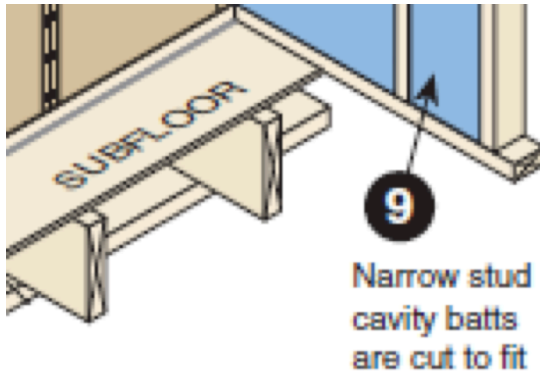
Exterior penetrations





International Energy Conservation Code

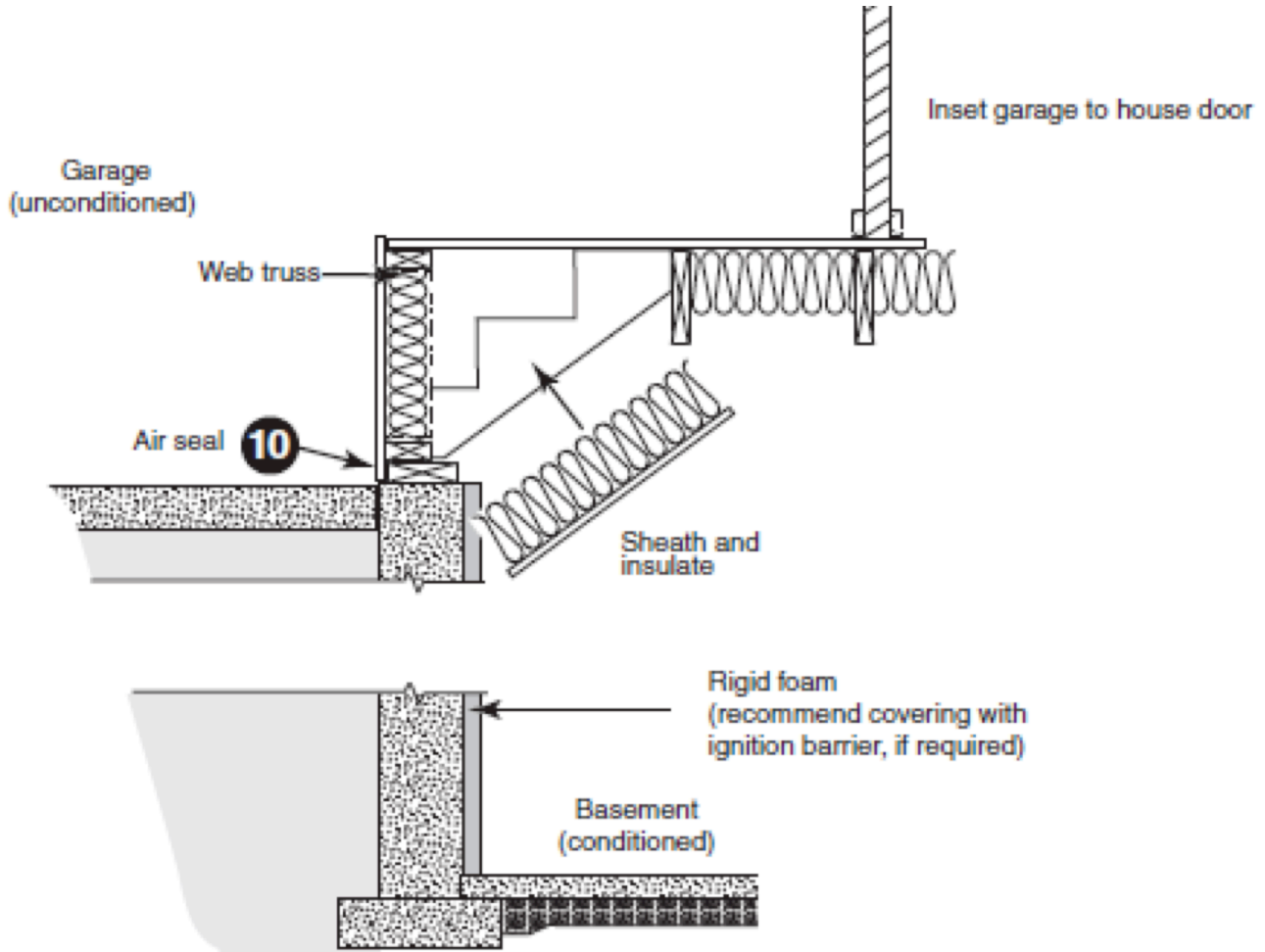
Component	Criteria	Applies to
402.4.2 Narrow Cavities	Batts in narrow cavities are cut to fit, or narrow cavities are filled by sprayed/blown insulation.	Insulation Trade





International Energy Conservation Code

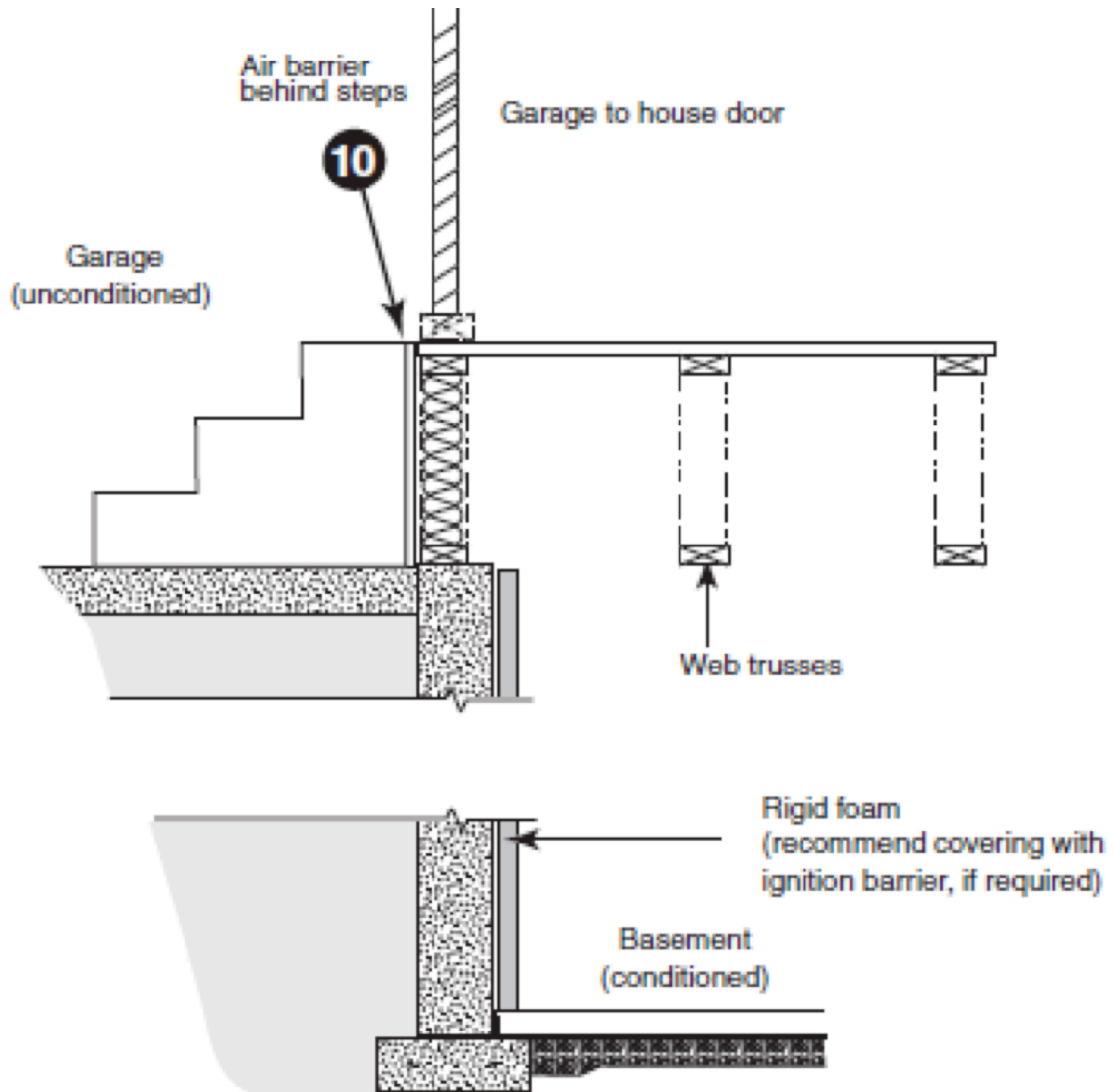
Component	Criteria	Applies to
402.4.1(7) Garage Separation	Air sealing is provided between the garage and conditioned spaces.	Insulation/Builder



Continued on Page 14



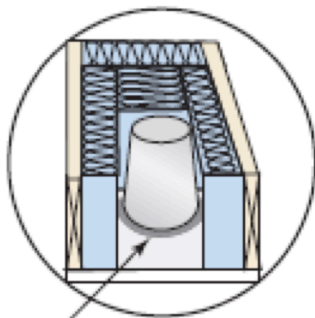
International Energy Conservation Code





International Energy Conservation Code

Component	Criteria	Applies to
402.4.5 Recessed lighting	Recessed light fixtures are air tight, IC rated, and sealed to drywall. Exception—fixtures in conditioned spaces.	Electrician/Insulation/Builder

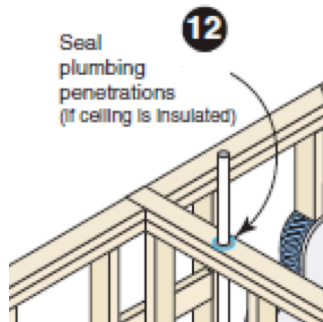
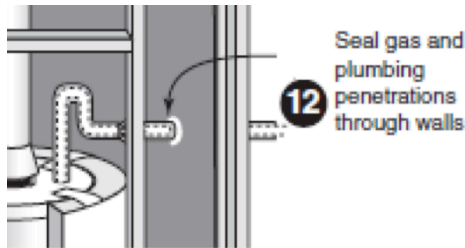
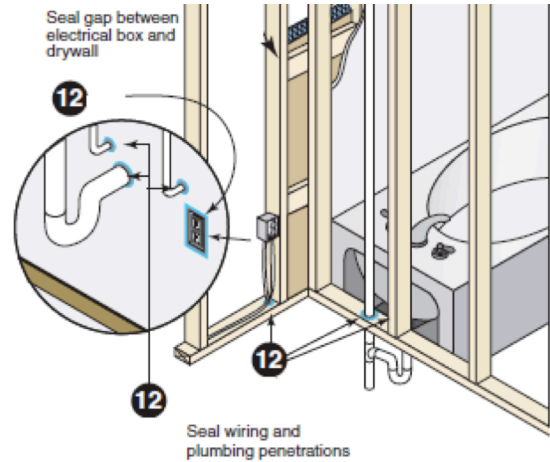
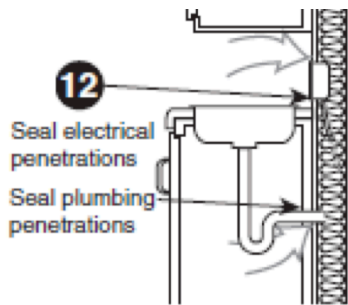


11 Seal airtight IC-rated recessed light fixtures to drywall



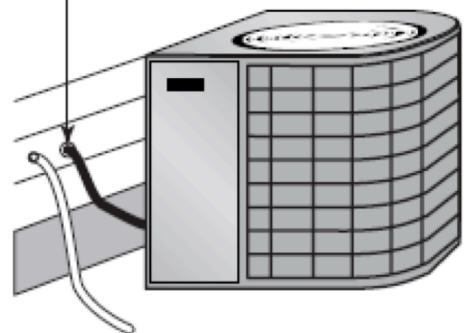
International Energy Conservation Code

Component	Criteria	Applies to
402.4.1(4) Plumbing and wiring	Insulation is placed between outside and pipes. Batt insulation is cut to fit around wiring and plumbing, or sprayed/blown insulation extends behind piping and wiring.	Builder/Insulation/Mechanical Trades



Exterior penetrations

12 Caulk exterior wall penetrations for refrigeration lines, condensate line, etc.

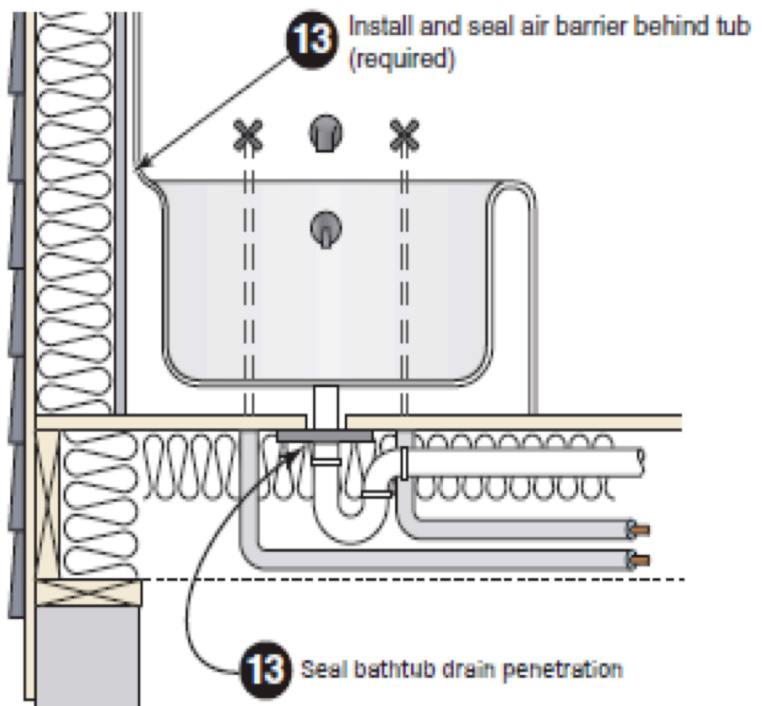
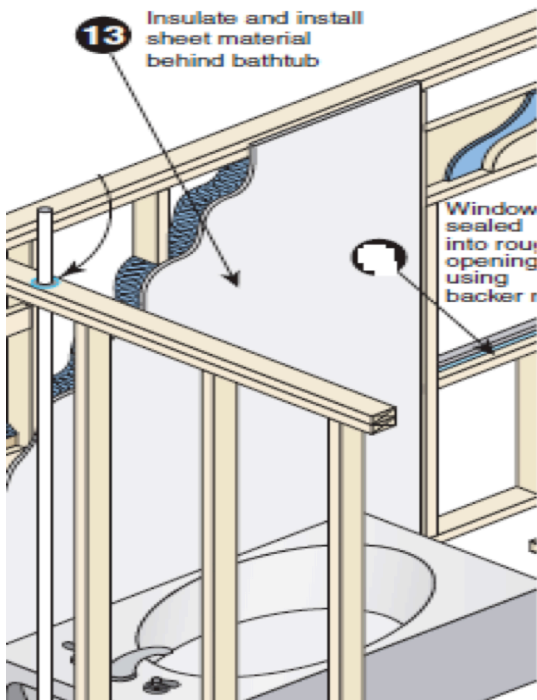




International Energy Conservation Code

Component	Criteria	Applies to
402.4.2(8) Shower/tub on exterior wall	Showers and tubs on exterior walls have insulation and an air barrier separating them from the exterior wall.	Building trade prior to and after installation of tub

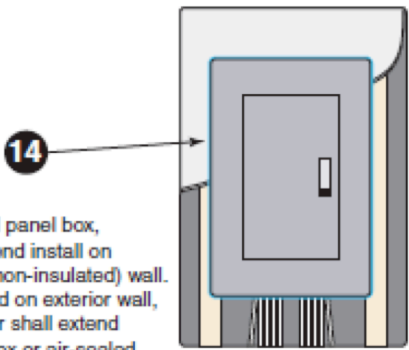
Shower/tub drain rough opening





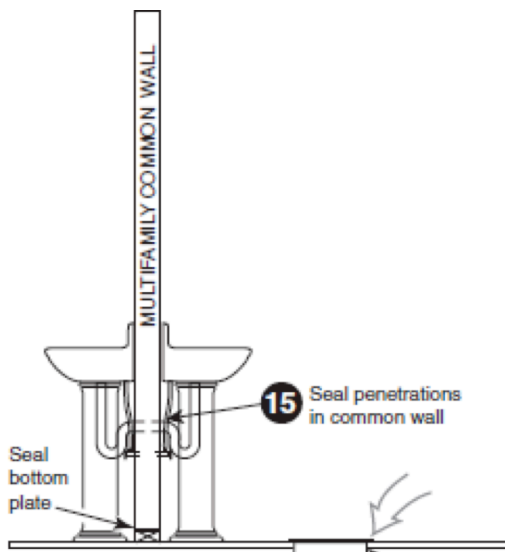
International Energy Conservation Code

Component	Criteria	Applies to
402.4.1(1&4) Electrical/phone box on exterior walls	Air barrier extends behind boxes or air sealed-type boxes are installed.	Electrician/Builder



14
Electrical panel box, recommend install on interior (non-insulated) wall. If installed on exterior wall, air barrier shall extend behind box or air-sealed box shall be installed.

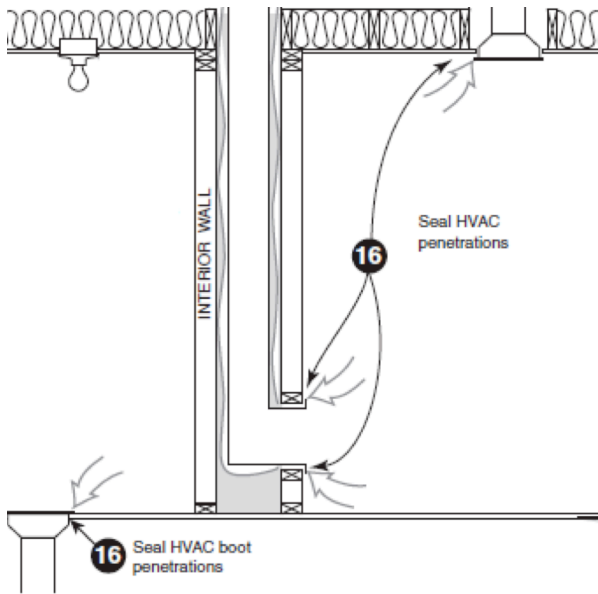
Component	Criteria	Applies to
402.4.1(9) Common Wall	Air barrier is installed in common wall between dwelling units.	Plumber/Builder/Insulation





International Energy Conservation Code

Component	Criteria	Applies to
402.4.1(1) HVAC register boots	HVAC register boots that penetrate building envelope are sealed to subfloor or drywall.	Mechanical/Builder



Component	Criteria	Applies to
402.4.2 Fireplace	Fireplace walls include an air barrier.	Builder

